

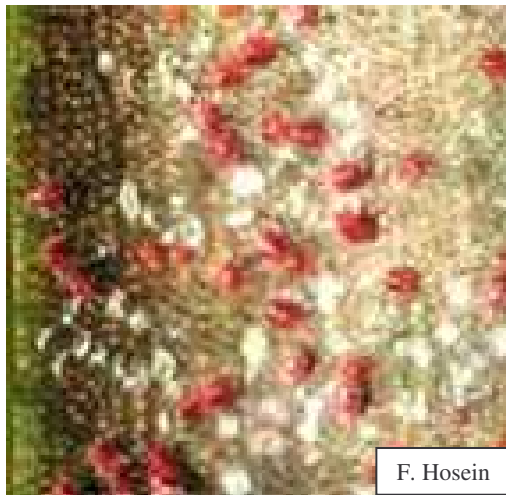
PEST: Red Palm Mite (*Raoiella indica*)

BASIC PROFILE: RPM is a pest of palms as well as possibly some bananas and ginger. It was first found in the US (in FL) in late 2007. It is a very small mite with a 3-4 week life cycle. Eggs are laid on the underside of leaves; larvae/nymphs feed on the plant, as do adults. All life stages are red in color. Damage symptoms include yellow speckling or blotches on leaves but no webbing is present. Lower leaves are most affected and can become completely yellow. The main route of spread is via infested nursery stock but mites can move on wind currents, and with storms and hurricanes.

LDAF ACTIVITY: LDAF checks for RPM during routine NSD and nursery grower inspections. RPM inspections focus on plant material originating from Florida. Careful visual inspection and paperwork checks are needed. There are no federal restrictions in place and chemical control can be difficult. Some natural predators may exist in the US but their effect on RPM has not been confirmed.



F. Hosein



F. Hosein



F. Hosein



F. Hosein

Damage on palms (*left*) and bananas (*above*)